



# THE BUSINESS INDEX

---

Fall 2023



**THE CHAMBER**

seattle metropolitan chamber of commerce



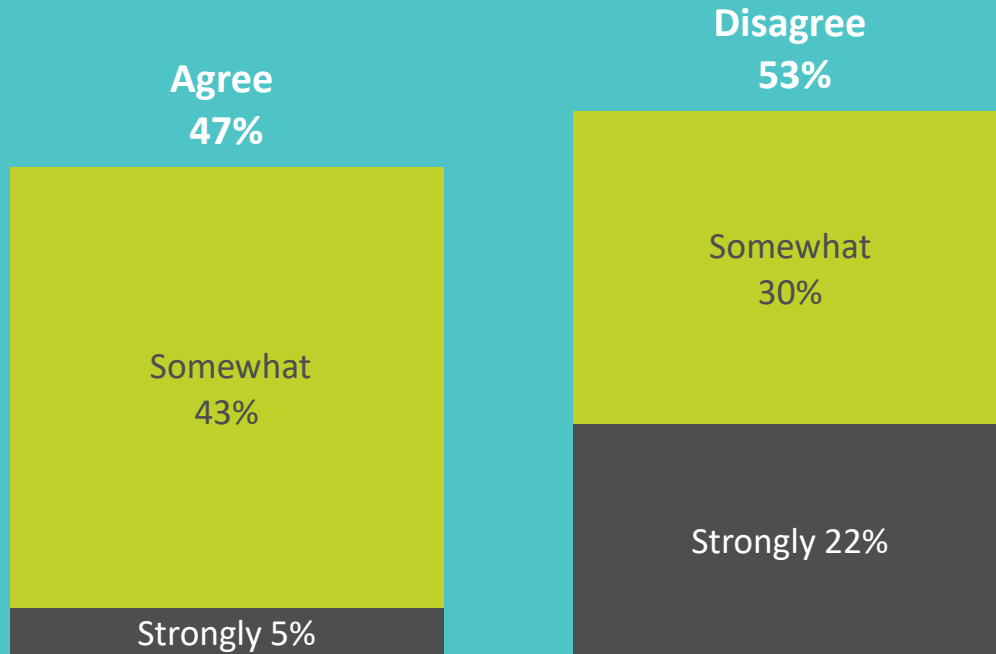
# Methodology

- Online survey of business decision makers with businesses in the City of Seattle
- Conducted October 15-29, 2023
- 129 completed interviews
  - Half of respondents were from businesses with fewer than 20 employees, one-quarter had 20-99 employees, & one quarter had 100+ employees.
  - Half of the respondents had businesses located in downtown Seattle, with the rest spread out across the city.
  - Respondents represent a wide array of industries with professional/ technical services leading the way at 17%, followed by arts, entertainment and recreation at 11%.



# Overall Business Environment in Seattle

Things are going in the right direction for the Seattle business community.



What do you think is the single most important problem facing the Seattle business community today?	%
Safety/security/Crime/Guns/Drugs	54
Homelessness	10
Housing/Affordable housing/Cost of living	10
Jobs/Economy/Economic recovery	8
Community discipline	5
Politicians/Government	3
Income inequality/Low wages/Poverty	2
Road repairs/Infrastructure	2
Cleanliness of the city/Litter	1
Enforcement/Policy	2
Racial injustice/Hate crimes	1
Climate change/Environment/Wildfires	1



# Employee Feedback

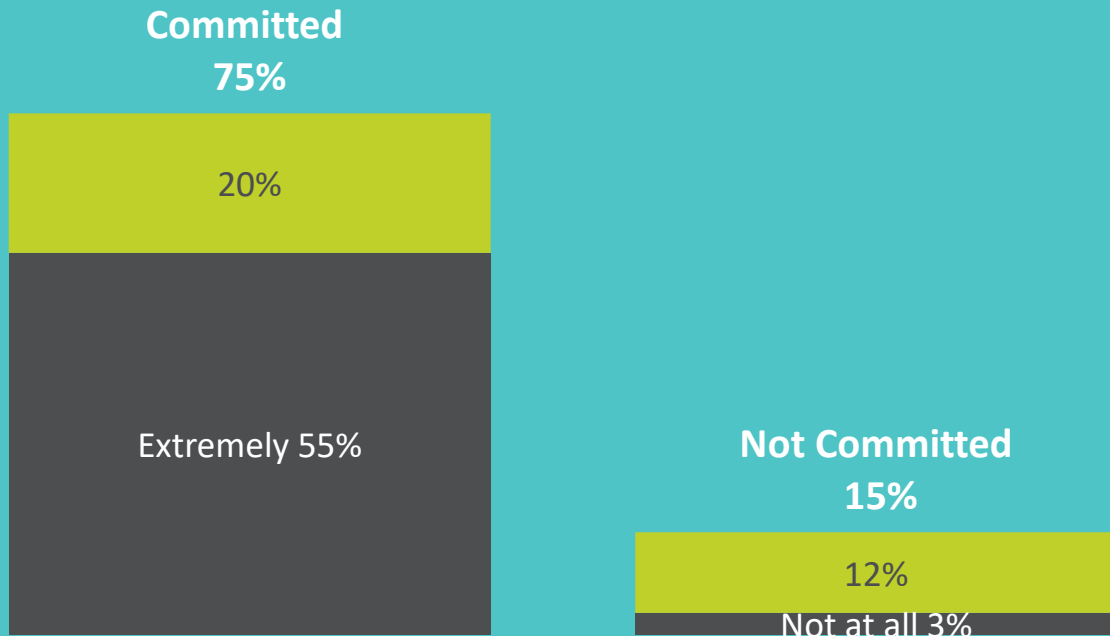
What feedback do you get from employees who are coming into a Seattle office about their concerns?	%
Public safety/Concerns in crime, drugs, violence	59
Commute/Public transportation convenience concerns	13
Traffic concerns	5
Hybrid/Remote work options	5
High cost of living	3
Parking mentions	4
Other	2
Nothing	10

What feedback do you get from employees who are not coming in about their biggest barriers to working in a Seattle location?	%
Commute/Public transportation convenience concerns	21
Public safety/Concerns in crime, drugs, violence	19
Traffic concerns	14
Hybrid/Remote work concerns	14
High cost of living	2
Parking mentions	1
Other	5
Nothing	25



# Commitment to Seattle

How committed is your business to maintaining a presence in Seattle?

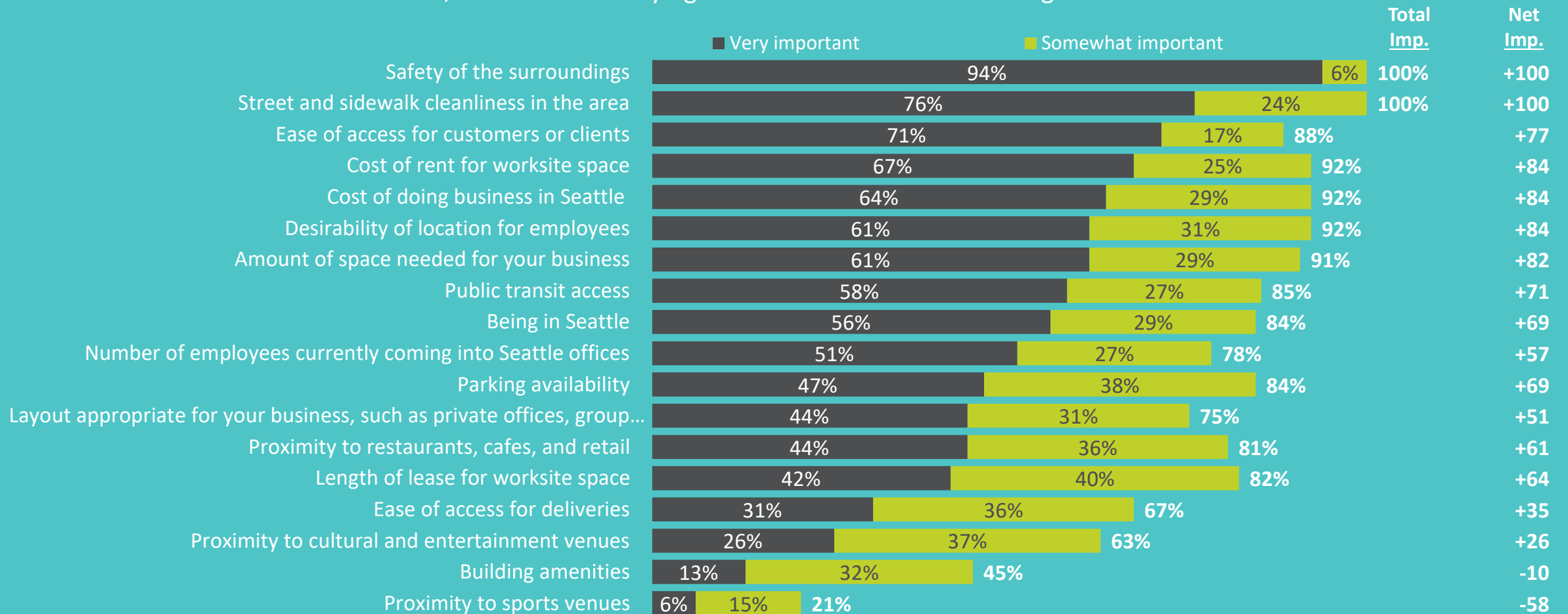


What is the top reason to be optimistic about operating a business in Seattle right now?	%
Population growth/increase	14
Good potential to run a business/Opportunities	13
Economic recovery/Economy growth	11
Government making adjustments	9
Educated workforce/Top performing employees	4
Enhanced public safety/Decrease of crime	6
Upcoming elections	5
Community willingness/teamwork/support	8
Good location	6
General positive response	5
Tourists	2
Many successful businesses are present	6
Improved infrastructure	2
Nothing/Not Optimistic	5



# Factors Influencing Choice of Worksite Location

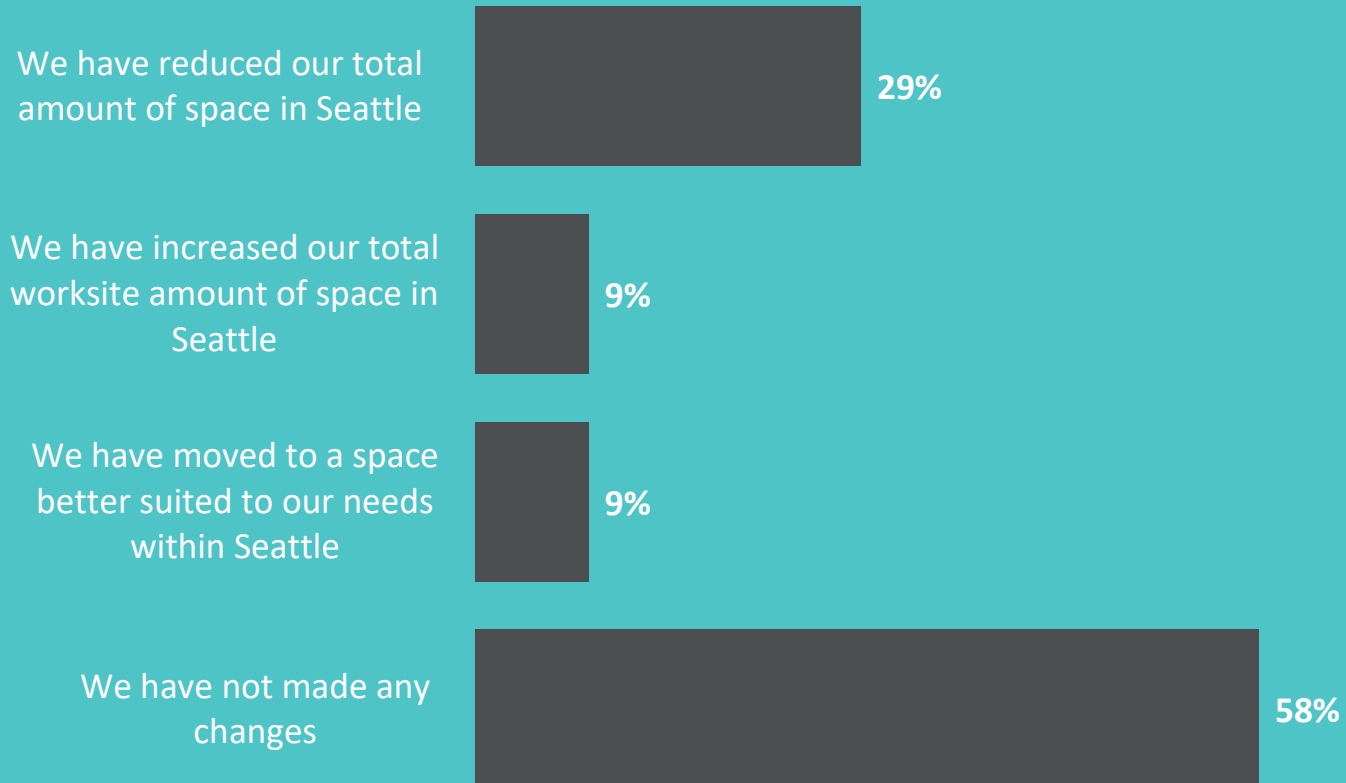
Please indicate how important each of the following is for your business when making decisions pertaining to worksite location, whether it be staying in the same location or moving into a new one.





# Worksite Changes

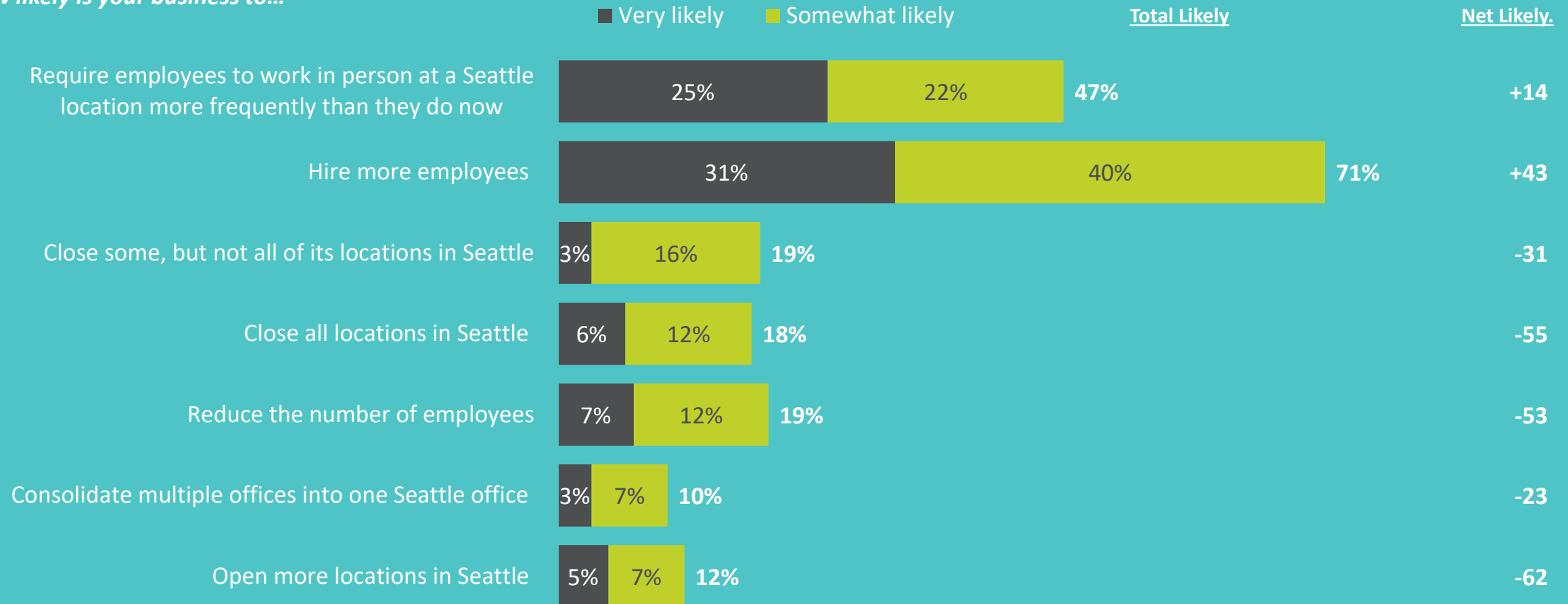
Which of the following changes has your company made in its worksite space or spaces in Seattle due to the pandemic and remote work? Please select all that apply.





# Future Plans

*How likely is your business to...*

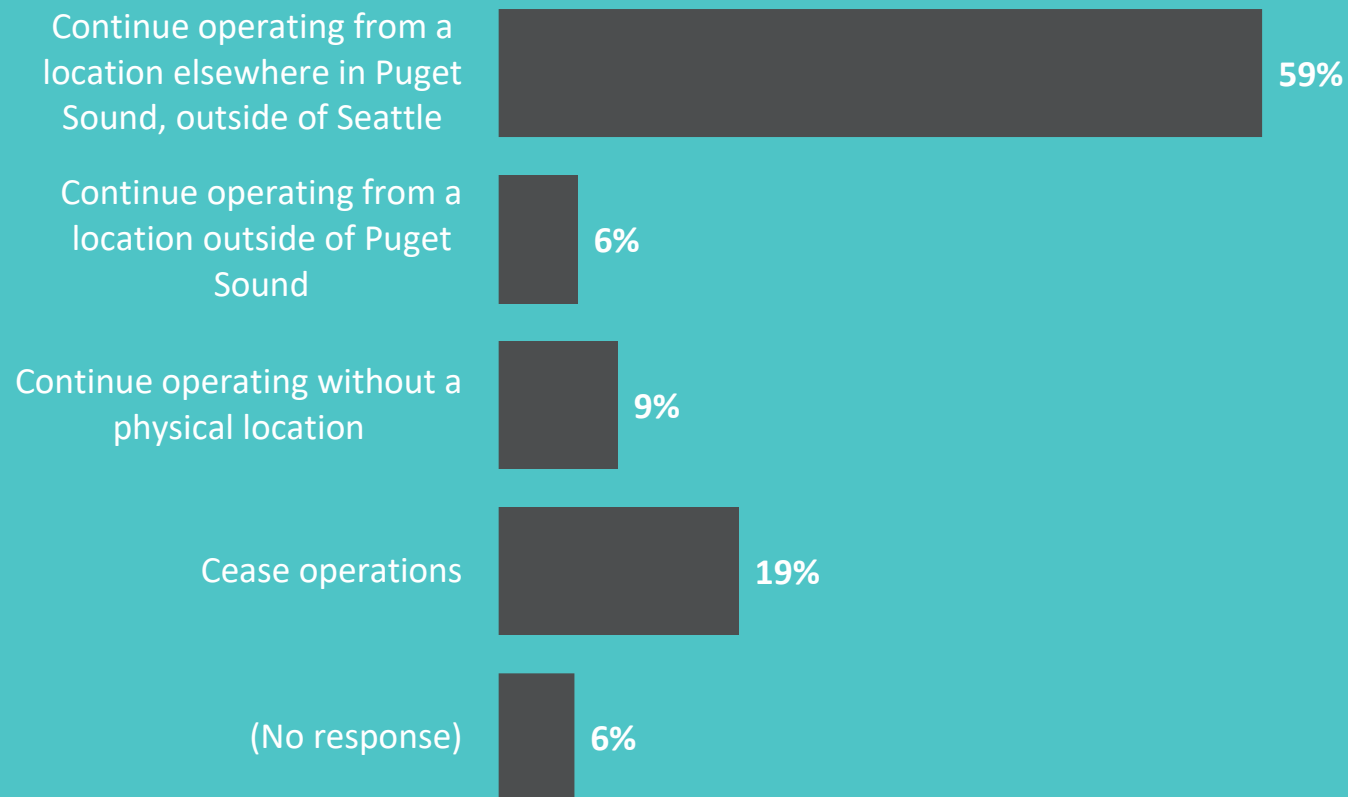






# Closing Seattle Locations

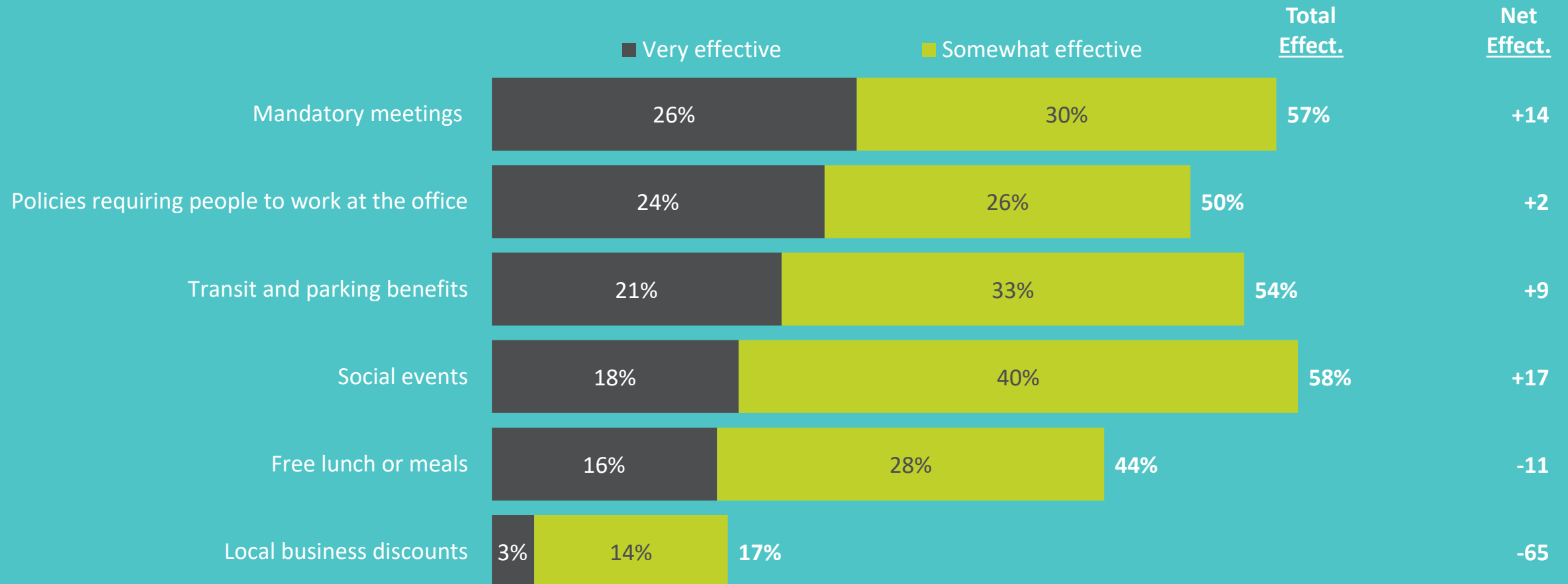
You indicated your business is likely to close some or all of its Seattle locations. Which of the following best summarizes your business' plans for the future? (18%; n=32)





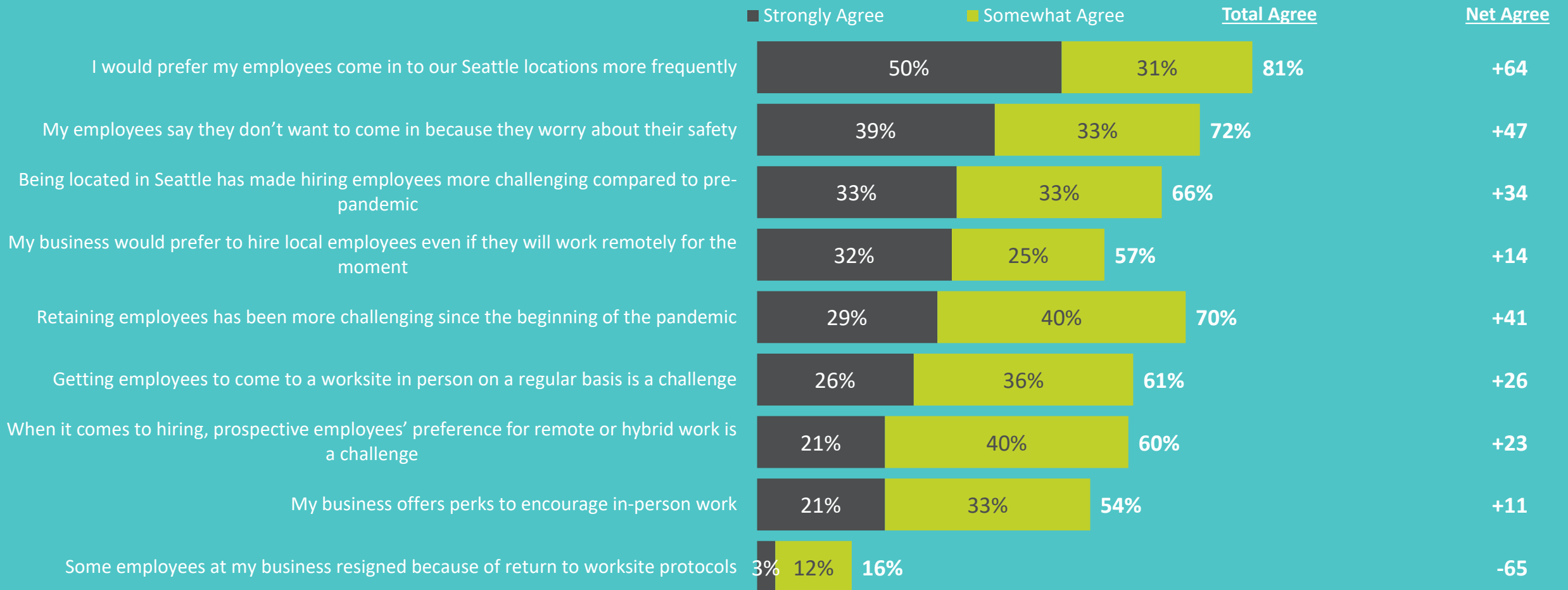
# Return to Office Policy Impact

Please indicate how effective each of the following has been for encouraging employees to work in person from a Seattle location.





# Attitudes About Worksite Protocols





# Other Attitudes

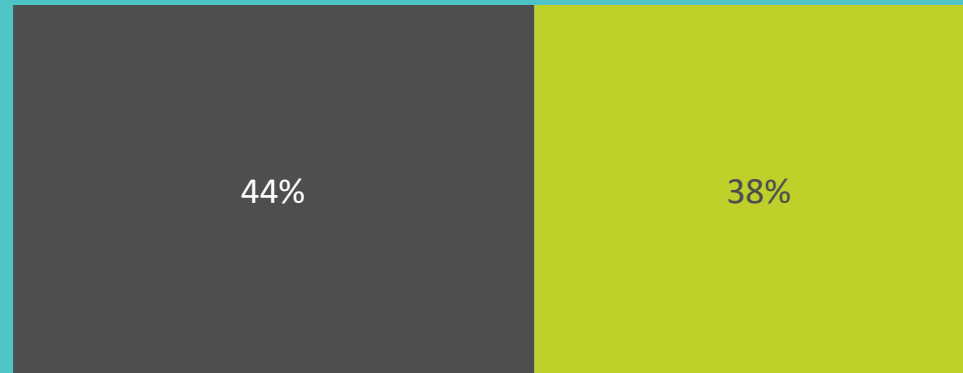
■ Strongly Agree

■ Somewhat Agree

Total Agree

Net Agree

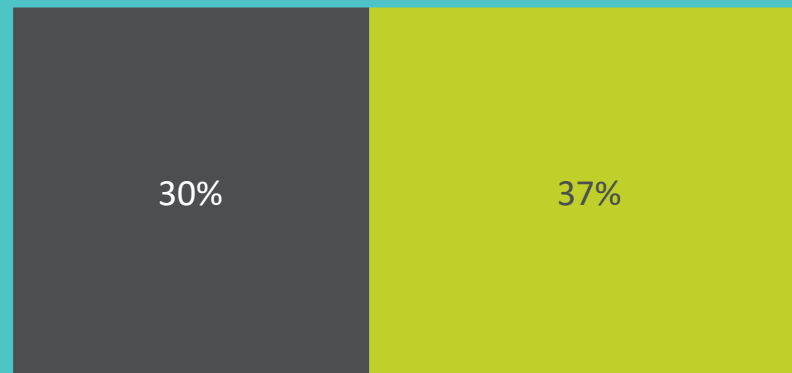
Having more connections to BIPOC vendors and suppliers can help build a more equitable and inclusive economy



82%

+67

We need more technical assistance and support to small businesses, especially minority-owned firms.



67%

+37